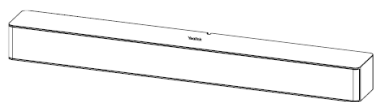
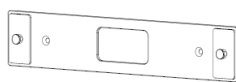


MSpeaker Pro Installation

Package Content



MSpeaker Pro



(L270 *W50.0 *T2.5mm)

Wall Mount Bracket



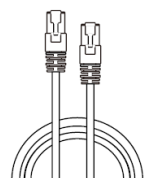
× 2

Φ6 * 30 mm, white, Polyamide



× 2

T4*30 FAHOZN3+ (+)



(3.0m, 9.84ft)

CAT5e UTP
(RJ45 - RJ45) Cable



Quick Start Guide

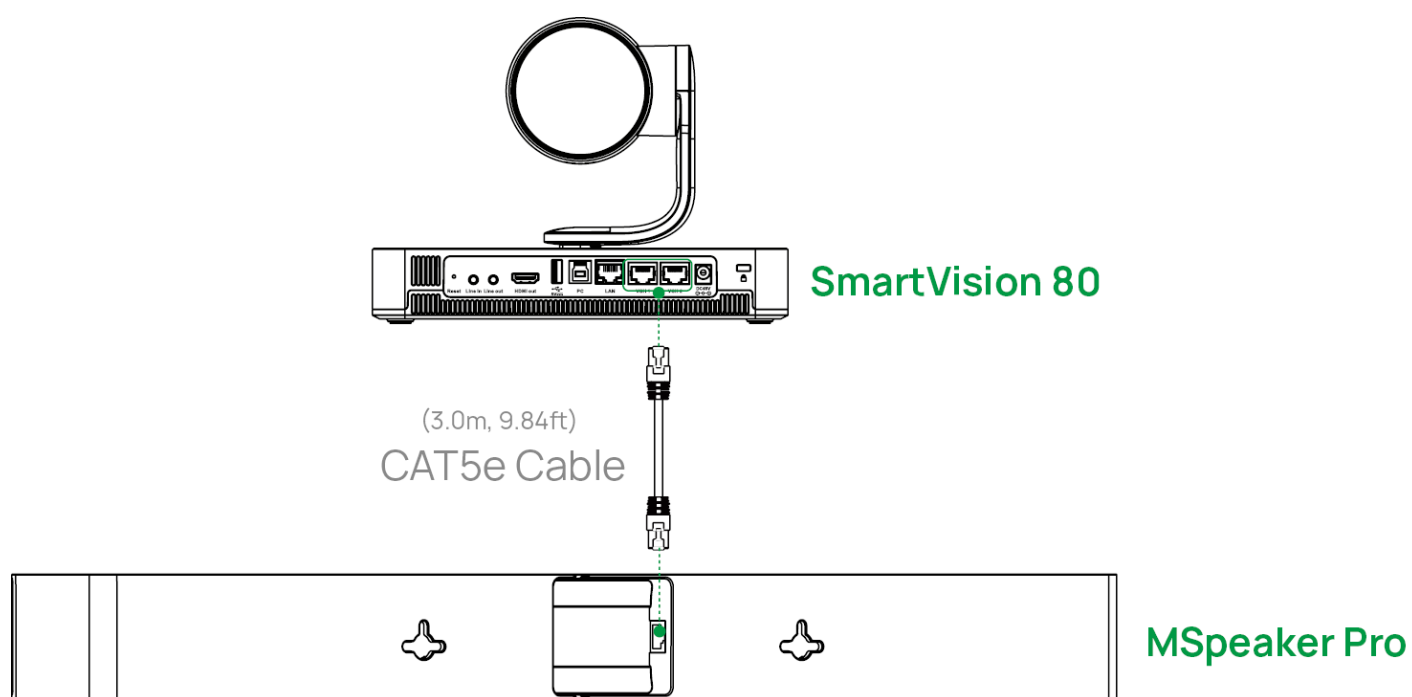
NOTE

We recommend using only the accessories provided or approved by Yealink. Using unapproved third-party accessories may result in poor performance.

MSpeaker Pro Connection

Connecting a Single MSpeaker Pro

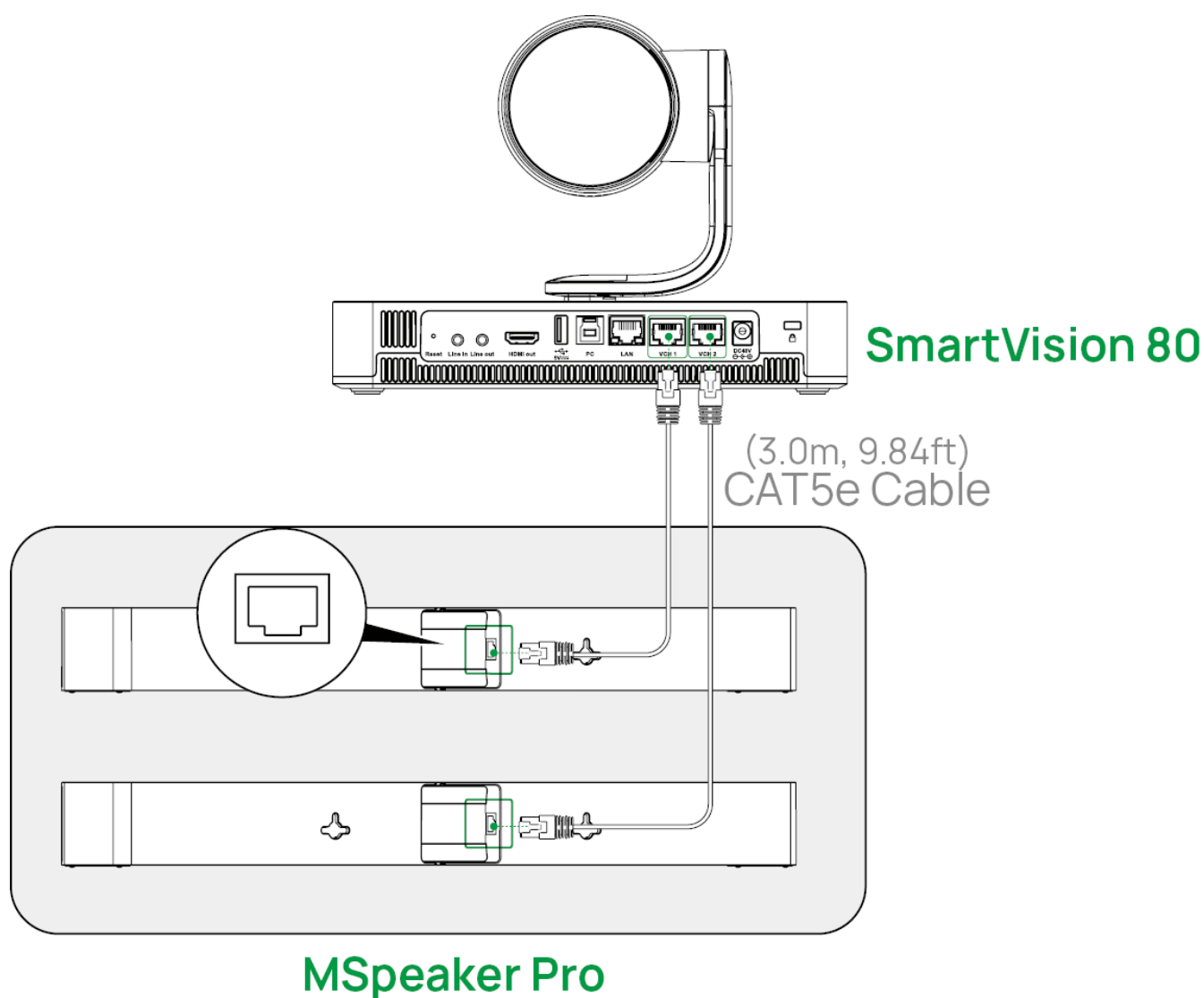
Connect the MSpeaker Pro to the VCH port of the UVC86, SmartVision 80, or AVHub using an Ethernet cable as the audio output device. The following example illustrates how to connect to the SmartVision 80.



Connecting Multiple MSpeaker Pro Devices

To connect multiple MSpeaker Pro devices to the VCH port of the AVHub or SmartVision 80, use an Ethernet cable.

Connection to SmartVision 80

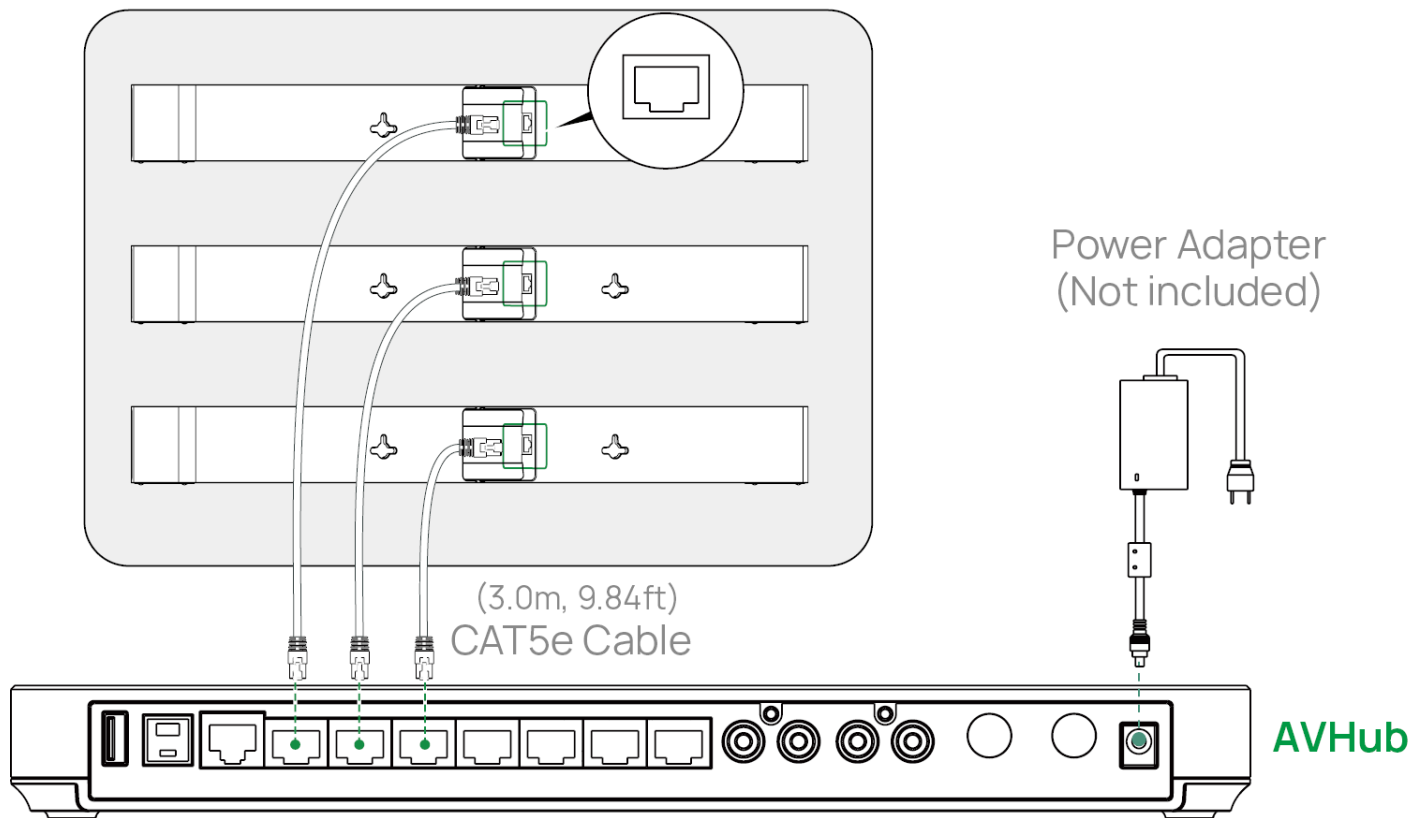


NOTE

To connect more than two MSpeaker Pro devices, the SmartVision 80 requires an additional PoE/PoE+ switch for the extra devices.

Connection to AVHub

MSpeaker Pro



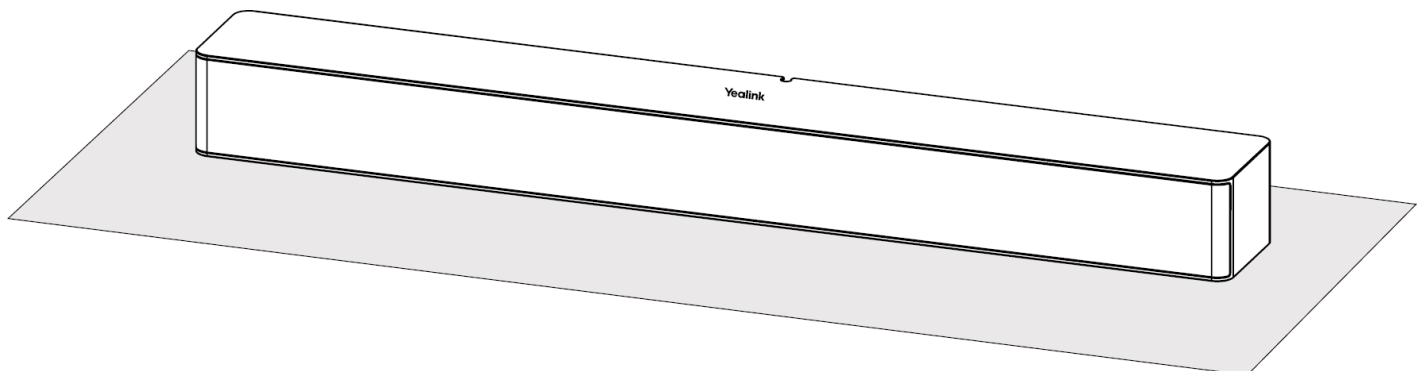
NOTE

To connect more than three MSpeaker Pro devices, the AVHub requires an additional PoE/PoE+ switch for the extra devices.

MSpeaker Pro Installation

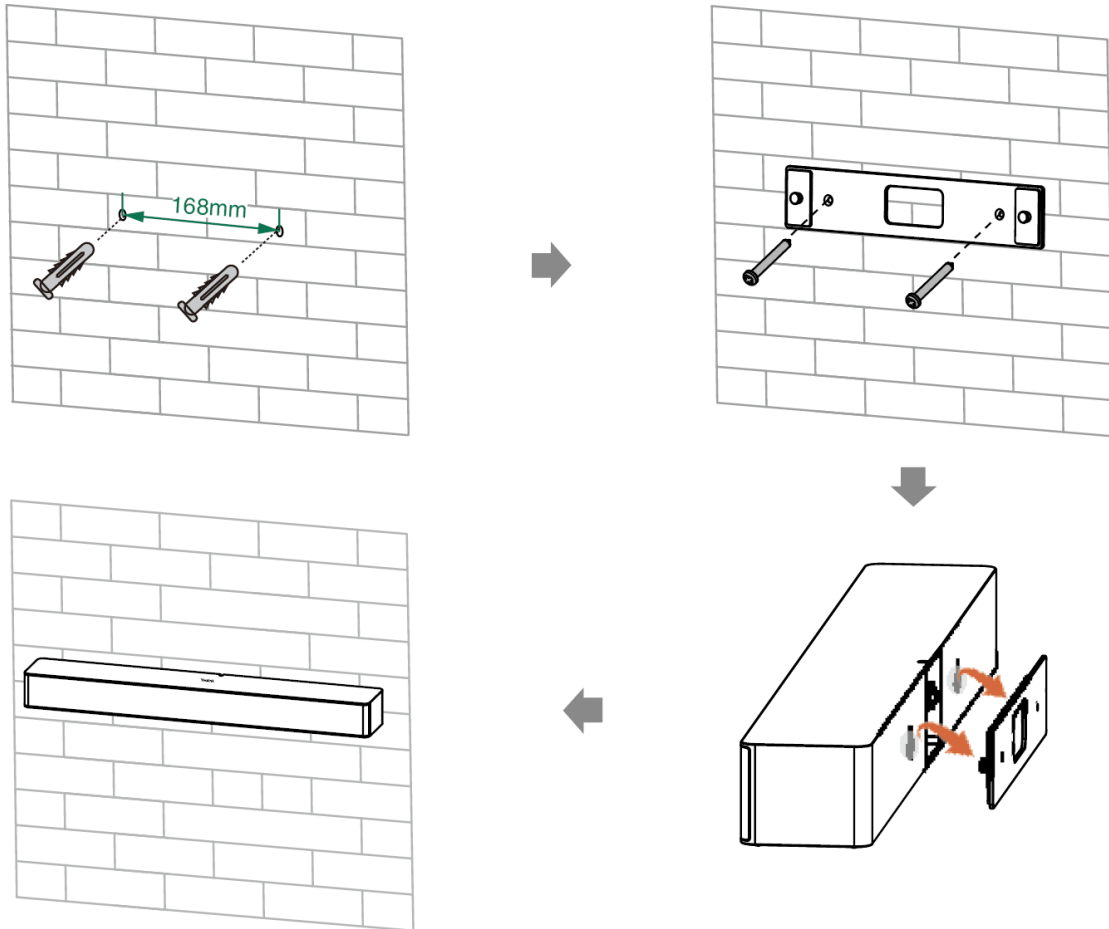
Placing on a Flat Surface

You can place the MSpeaker Pro on a conference table.

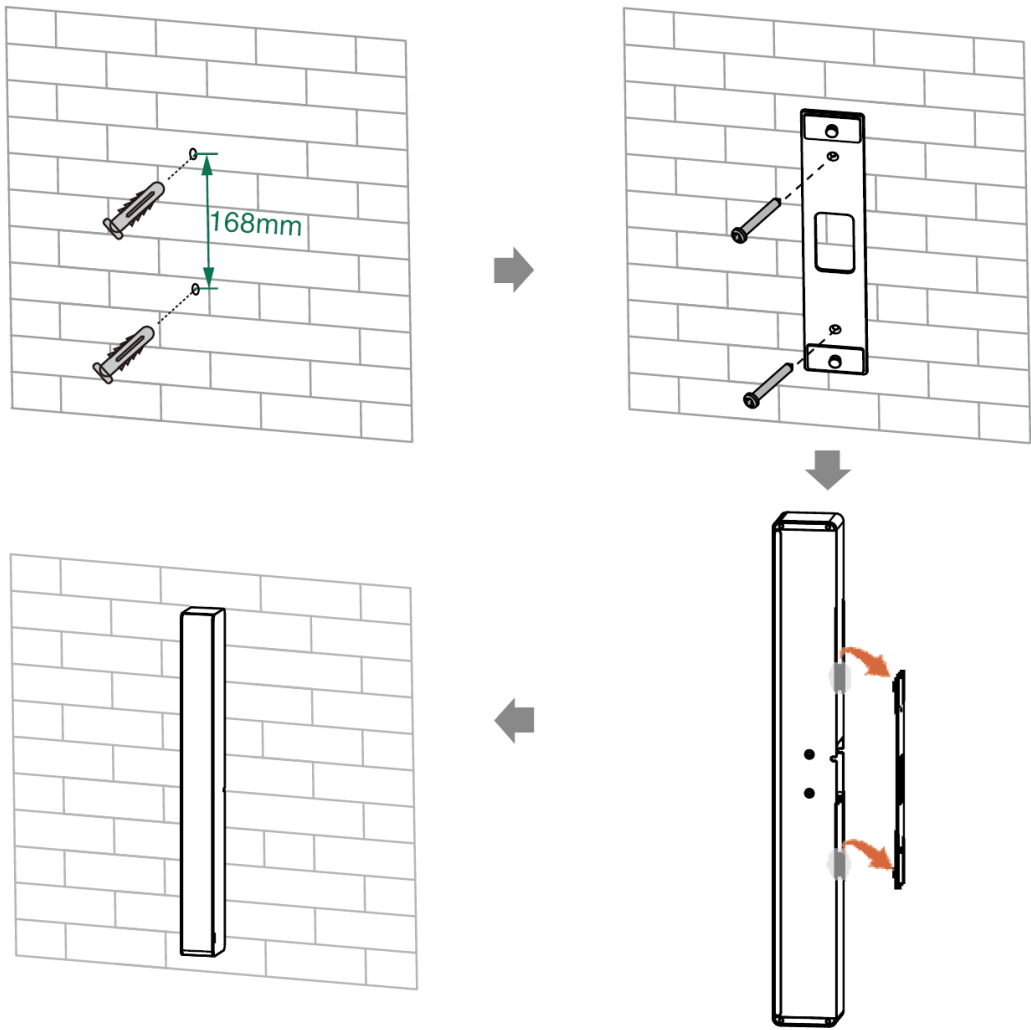


Wall Mounting

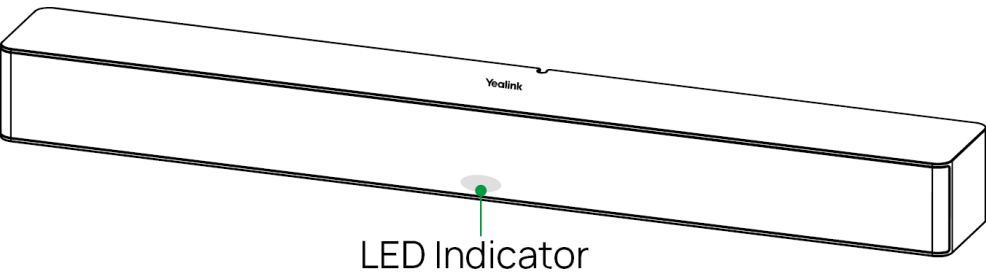
- **Horizontal Installation**



• Vertical Installation



LED Indicator Instructions



LED Status	Description
Off	The device is powered off.
Solid Green	The device is active.
Red and Green Flashing Alternately	The device is initializing.